

Art and Design

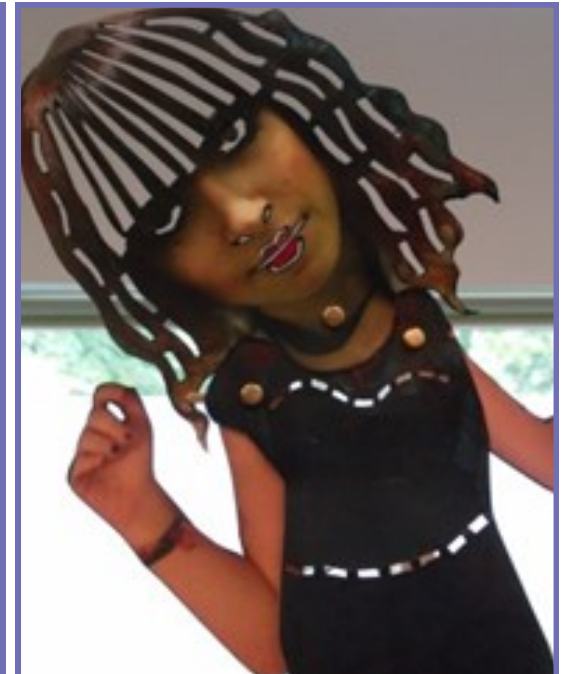
ART AND DESIGN A LEVEL (Edexcel unendorsed)
AND BTEC LEVEL 3 IN ART AND DESIGN

Why choose Art and Design:

Government In A level Art and Design and BTEC Art and Design, you will be given the opportunity to explore all types of Art and Design including : Digital Photography, Game Design, Fashion, Graphics, Film and Theatre, Product design, Interior and Architecture, Animation and Mixed Media. Whatever your chosen pathway, you will be assisted in creating your portfolio for progression to university or employment.

These courses are examined by EDEXCEL The unit coverage is either 6, 12 or 18 units. (Equivalent to 1, 2 or 3 A levels.)

Future Prospects: In the last few years we have had 100% progression onto degree courses or employment in design related subjects including: Architecture, Game Design, Fashion, Media, Illustration, Product Design, Film, Photography, Graphics and even Fine Art. Most of our students do not need to take a foundation year as all disciplines are covered by our extensive studies during 6th form.



Enrichment Opportunities:

At Our studio is open to 6th form students all day, every day. Many students spend their private study periods and lunchtimes in the studio. Every student has their own desk and are welcome to stay until at least 5pm every day. We generally work holidays also if students wish to come in.

We go on many research visits to galleries and museums to assist students with their research. Life drawing classes are available and we offer many work experiences with reputable design companies.

Our Recent Successes:

- 100% of HG students progressed to university last summer.
- 20% of students had offers from Russell group universities. 40% of students achieved one or more Distinction*. One student achieved triple D* and was offered a place at St. Martins.
- Progression routes included: Game Design, Architecture, Product Design and Fine Art.

Assessment and Examination: All assessments are skills based. 40% of all work is externally examined. Both BTEC and A level have externally set tests but there are no written exams.

BTEC offers the opportunity to gain the equivalent to one, two or three A levels, universally accepted by universities and apprenticeships. A level Art and Design offers an opportunity to sit three other academic A levels.



Why choose Art and Design at Highbury Grove: We have a 15 year history of 100% A*-C pass rate at A level and more recently, a 100% Distinction and Merit pass rate at BTEC. Last year we had a high rate of D* which was higher than the national BTEC average and comparable with the top schools in the country.

Our progression routes to uni and employment are well above our local competitors.

Entry Requirements:

AS Art and Design: Six A-C's at GCSE including English and Maths. Minimum of B in Art, DT, Textiles or Graphics.

BTEC Art and Design: Six A-C's at GCSE including English or Maths. A D may be considered if a re-sit will produce a C by January. B in an Art related subject or an excellent portfolio of personal artwork.



***“Thanks Guys! I got into a Russell group university with a BTEC in Art and Design! I am now travelling the world and getting lots of work. I am looking forward to coming back to share my experiences with your new students. I cannot thank you enough”
S. Bozdag.***